

**BGS NATIONAL PUBLIC SCHOOL**  
HULIMAVU, BANGALORE-76  
**Half Yearly Examination – October 2018**  
**Subject: EVS**

Name: \_\_\_\_\_

Roll No. \_\_\_\_\_

Class III / Section: \_\_\_\_\_

Date: 05-10-2018

Time: 2 Hour 15 minutes

Total Marks: 50

1. Choose the correct option for the following questions. (½X10=5)

a. Which of the following birds stitches two leaves together with its beak to make nest?

- i) Tailor bird                      ii) Kingfisher                      iii) Weaver bird

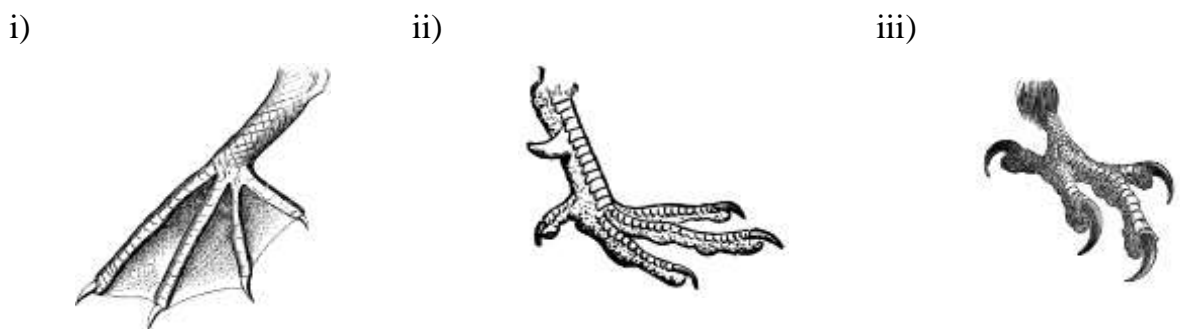
b. Which among the following fruits have only one seed?



c. Which among the following have a baby plant in it?

- i) seed                      ii) leaf                      iii) stem

d. Which picture shows the feet of a hen?



e. Birds, insects and lizards reproduce by:

- i) laying eggs                      ii) giving birth to young ones                      iii) both (i) and (ii)

f. What among the following keeps the egg warm and also protects from the enemies and bad weather.

- i) nest                      ii) wings                      iii) feathers

g. What type of beak does a woodpecker have?

- i) long curved beak                      ii) sharp pointed beak                      iii) broad flat beak

h.



Which bird has the feet shown in the picture above.

- i) Crow                      ii) Woodpecker                      iii) Duck

i. The reproductive organ of a plant is ;

- i) fruits                      ii)flowers                      iii)leaf

j. The bird uses its sharp and hooked beak to eat small animals .

- i) Sparrow                      ii )Sunbird                      iii) Eagle

**2. Give one word for the following. (1X5=5)**

- a. The flat part of the leaf. \_\_\_\_\_
- b. The process of giving birth to young ones. \_\_\_\_\_
- c. A newly hatched baby bird. \_\_\_\_\_
- d. Sharp, curved claws of an Eagle \_\_\_\_\_
- e. Tiny openings in the leaf through which air enters. \_\_\_\_\_

**3. Complete the analogy (1X5=5)**

- a. above the soil : shoot :: under the soil : \_\_\_\_\_.
- b. fish: gills :: cockroach: \_\_\_\_\_.
- c. food stored in stem: potato :: food stored in roots: \_\_\_\_\_
- d. Cauliflower : \_\_\_\_\_ ::Sugar Cane : Stem

- e.  : Woodpecker ::  : \_\_\_\_\_.

**4. Give scientific reason for the following.**

**(1X5=5)**

1. Plants do not move in search of food.

---

---

---

2. Hummingbirds have long, thin beak

---

---

---

3. All the windows in a house should have wire netting.

---

---

---

4. Many birds migrate from one place to the other once in a year.

---

---

---

5. Birds have thin and hollow bones

---

---

---

**5. Unscramble the following words and explain the term.**

**(1 1/2 x 3 = 4 1/2 )**

a. TOSMTAA

---

---

b. RIA SOELH

---

---

c. RTNUK

---

---

6. Fill the table

( $\frac{1}{2} \times 3 = 1\frac{1}{2}$ )

<b>Bird</b>	Parrot	<b>B.</b> _____	Duck
<b>Type of beak</b>	<b>A.</b> _____	Sharp, Curved and Hooked	<b>C.</b> _____

7. Answer the following.

( $2 \times 5 = 10$ )

a. Why don't crows or sparrows fall off while sleeping on a branch? What type of beak does a sparrow have?

---

---

---

b. By looking at the roots, how can you say whether it is the root of a rice plant or a bean plant?

---

---

---

c. Why should we have windows in a house?

---

---

---

d. What are the conditions required by a seed to grow into a new plant?

---

---

---

e. What are the different types of feathers birds have? What are its functions?

---

---

---

**8. Do as directed**

**(2X5=10)**

**a. Define the following terms:**

i) Hatching:

---

---

ii) Migration :

---

---

**b. Change and rewrite the underlined words to make the sentences correct.**

i) Stem prepares food for the plant.

---

ii) Dirty air kills the germs that can make us sick.

---

**c. Identify the picture and label the following parts :**



- i) The flat broad part of the leaf
- ii) Thin tubes running across the leaves

**d. Think and answer**

i) Raju has got four vegetables, potato, spinach, tomato and peas in a plate. Can you help him to find which part of the plant these vegetables belong to. Write the answer in the space provided.

---

---

---

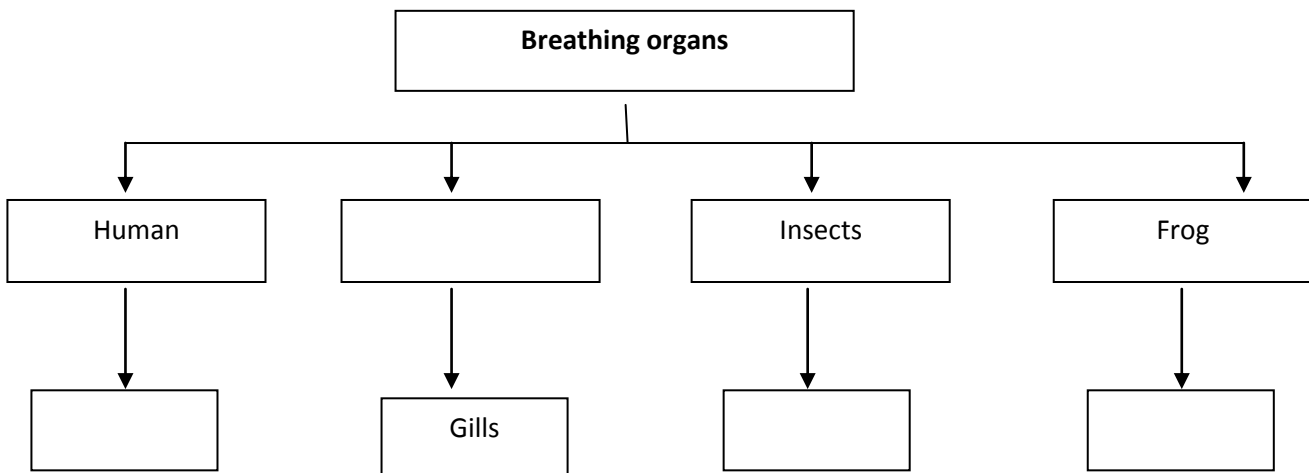
ii) Rani planted a sapling in a jar and covered it with a lid. After two days the plant died. Give reason why the plant died?

---

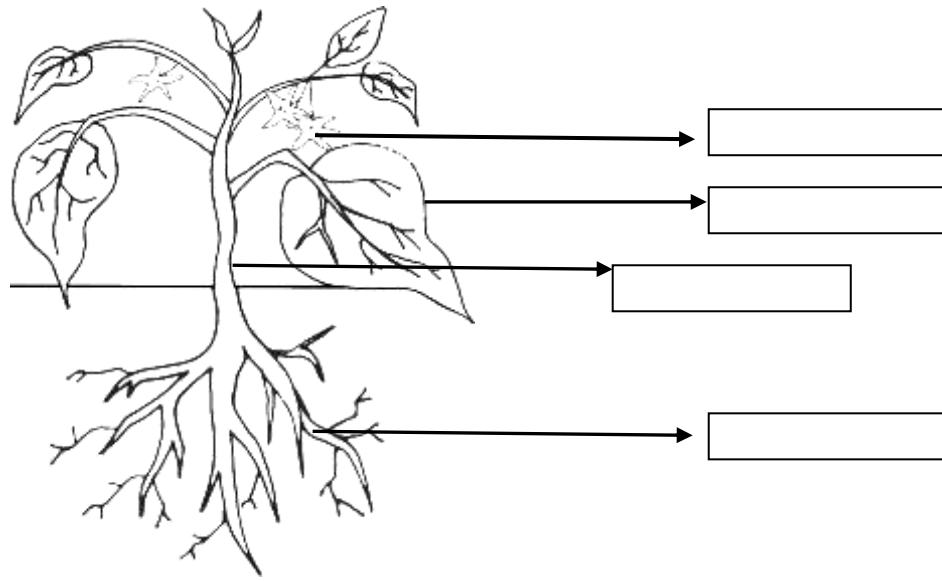
---

---

**e. Complete the flow chart**



9. Label the different parts of the plant and explain how leaf make food for the plant.  
(1X4=4)



---

---

---